

OCTOBER

the PULSE

of PenMet Parks

Become a Group Fitness Instructor

With the Recreation Center opening in early 2025, we are actively seeking group fitness instructors to join the fitness team. No prior experience is required, so if you have enthusiasm and passion for health and for people, contact us today!

Fill out the form below!

Ready to workout? Try our fitness classes and meet our great instructors!



in this issue

Fun Fall Festivities

Page 2-3

Rec It Up! Fun For All Ages

Page 4-6

Seniors & Specialized Rec

Page 7

Autumn Wedding Venues

Page 9

Rosedale Hall Ribbon Cutting

Page 10-11

Capital Improvement Projects

Page 12-13

SCARECROW festival

The Annual Scarecrow Festival is the perfect way to ring in fall and enjoy some seasonal activities. With fun for all ages, it's an event the whole family can enjoy.



FREE SHUTTLES

Make your visit easy with our convenient shuttles running from Gig Harbor High School, at 5101 Rosedale Street NW.



PEEWEE RODEO

Every little cowpoke can throw on their best boots and have a darn-tootin' good time!



SCARECROW CONTEST

Create your own themed scarecrow and go for the gold in this unique, festive competition.



PUMPKIN LAUNCHER

Make a mess and see pumpkins soar with this exciting fan-favorite that is fun for everyone!



MAKERS MARKET

Explore inspiring makers and artists that create diverse pieces and products.

DON'T MISS THIS FREE EVENT!

SAT 10.5

11 AM - 4 PM

**SEHMEL
HOMESTEAD PARK**

PRESENTED BY

TEAM **Schulte & Co.** | NEIGHBORHOOD
REALTORS + COMMUNITY EXPERTS
REAL ESTATE

TRUNK OR TREAT

JOIN US!

Join us for our annual spooky event at Sehmel Homestead Park

Cars will be decorated, music will be playing, and each child will receive a candy/goodie from each booth.

FRIDAY
10.25
5 - 7 PM



REC IT UP!

LITTLE ARTISTS

ANIMALS ALL AROUND US

Immerse yourself in the wonder of the Pacific Northwest and create art of local wildlife.

 Age 3.5-5  11/6-12/18

 Wednesdays 10-11 AM



ART CLUB

CARTOON CREATIONS

Bring your favorite characters to life through cartoon-inspired art forms.

 Age 6-11  11/5-12/17

 Tuesdays 4:30-5:30 PM




MOSAIC ART

SEASONAL WORKSHOPS

Explore your creativity in mosaics, led by Barb Henderson—fun, hands-on art for all ages!

 Age varies  10/6, 11/23, 12/15

 1-4 PM



KID'S NIGHT OUT



\$10 sibling discount!

Enjoy the night off and leave the kids to us!
New themes every month, fun activities, dinner, and a movie.

» Saturdays 5 PM - 9 PM » Sehmel Homestead Park Volunteer Vern Pavilion » \$45 In-District \$54 for Out-of-District

Coming up next

» MAD SCIENTIST!

October 19

Young inventors will unleash their creativity through scientific discovery and hands-on experiments. Children of all ages will feel like mad scientists!

YOUTH BASKETBALL

Winter League

January to Mid-March
Pre-K to Middle

In-District registration
October 16 at 8AM

In-District fee
\$150

Out-of-District registration
October 23 at 8AM

Out-of-District fee
\$180

Pre-Season Skills & Drills

November & December
Grades 2 to 8

In-District fee \$75 Out-of-District fee \$90

High School Drop-in Play

November & December
Grades 9 to 12

In-District fee \$50 Out-of-District fee \$60



Join our Adult Dungeons and Dragons sessions for an evening of adventure, strategy, and storytelling in a fun, welcoming environment—no experience necessary!

- ▶ Wednesdays 6-9 PM
- ▶ 11/6 - 12/18
- ▶ District HQ



ADULT DUNGEONS & DRAGONS

TEEN ADULTING WORKSHOP



Basic Budgeting | 10/5

Resume Building | 10/19

Interviewing Skills | 10/26

Basics of Investing | 11/2

Your teen can develop essential life skills through our Adulthood 101 series, where each two-hour session focuses on different skills like resume building, interview techniques, and personal finance.

COSTUME PARTY



You are invited to an eerie-sistible Specialized Recreation Party for Bingo and dancing!

October 12 | 6-7:30 PM
PenMet Parks District HQ

We cannot wait to see you there for lots of spooky fun!



Join us!



PSA Seeking Volunteer Choir Director

Our PenMet Senior Advocacy group (PSA) has been meeting since July to explore programming ideas for older adults in our Gig Harbor community. One intriguing idea is an informal senior choral group, for those who would enjoy singing with others. If you've seen the 2007 documentary "Young@Heart," you will understand the power of this idea. While this might be considered making more of a "joyful noise" than fine choral singing, it would still require an experienced director to lead the group. Please contact Coordinator for Senior Programs Edie Morgan at emorgan@penmetparks.org if you know of someone who might enjoy this kind of community engagement.

The PSA is open to older adults living in the Gig Harbor area who are interested in generating inspirational and enriching programs for seniors. Our next meeting is Friday, October 18 at 1:30 PM, at our District Headquarters at 2416 14th Ave NW. All are welcome.



Household Size	Annual Gross Income
1-person	\$64,880
2-person	\$74,160
3-person	\$83,440
4-person	\$92,640
5-person	\$100,080

Financial Assistance for All

PenMet Parks is committed to reducing financial barriers for our fee-based programs. We provide financial assistance for all ages and activities for qualifying households.

Financial assistance awards up to 75% off programs up to a maximum amount of \$400 per person per calendar year.

Art Installation at District HQ

Thank you to Peninsula Art League for curating the first installment for Art in the Park. Juror Sarah Kavage selected an inspiring and eclectic variety of pieces to showcase throughout our new space at the District Headquarters. Below is a link to the catalog but please visit soon and see these pieces in person, you will not believe the size and vibrance. All pieces are for sale and 100% goes to the artists and you can even vote for your favorite.



Elusive Autumn Song
by Margaret Henry

DONATE **BLOOD** **SAVE** A LIFE

**OCT
14**

**1-6
PM**

Register at www.redcross.org

**2416
14th
Ave NW**



**American
Red Cross**

Blood
Services



Kiwanis
CLUB OF GIG HARBOR

Venues for Your Special Day

Fall is the perfect time to get married, with the rich autumn colors and cool weather. We have multiple spaces ready for your big day so you can create a memorable wedding that will last a lifetime. Contact us to book today!

✉ info@penmetparks.org ☎ (253) 858-3400



Rosedale Hall Ribbon Cutting

PenMet Parks diligently works to keep all parks and community spaces accessible for all. The recent Rosedale Hall renovation project was a huge milestone for the District as it involved major updates to this space while maintaining its original charm and integrity. A ribbon cutting ceremony was hosted to celebrate its reopening.



New Life Breathed into Rosedale Hall

Rosedale Hall has been a beloved community space for many years, its purpose shifting across the decades. Today it has become a staple within PenMet Parks as a community space for local residents to enjoy fitness programming, celebrate special events, and simply come together. It was clear that time had taken its toll on Rosedale Hall, and major renovations were necessary to maintain it as an accessible and inviting place for people to gather and connect.



Improvements to Rosedale Hall were identified as a strategic District priority. This project focused on accessibility improvements, including exterior entry access via ramp, restroom accessibility, and total renovation of the interior. Along with repair of exterior walls and roof trusses, a catering kitchen was added as well as essential storage for classes, camps, and other community programs. The large community area, including the raised platform formerly considered a ballroom and stage, was updated while maintaining the same footprint.

Celebrating the Next Era for Rosedale Hall

Rosedale Hall was reopened in July of 2024 and welcomed back programs and event rental opportunities. On September 17, a ribbon cutting ceremony was held here to commemorate the amazing renovations and journey of Rosedale Hall.

The PenMet Parks Board of Commissioners was in attendance and shared the value this space has brought to the community over its lifetime. Many community members echoed the same reflections, recalling their cherished experiences within Rosedale Hall. From past holidays to wedding receptions, guests recounted the fond memories they had of times spent in this beloved space.

“I was floored with how beautifully and lovingly Rosedale Hall has been restored. I have many special memories growing up here and speak for many of us when I say I appreciate the love, care, and attention paid to this part of our history.”

- Beverly Jackson, community member

Seeing people come together to celebrate the next chapter for Rosedale Hall spoke to its impact within the community. As neighbors laughed, ate, and reminisced together, it was clear that the next era of Rosedale Hall would be just as bright and full as the years before. PenMet Parks is grateful for all who attended this special event and is eager to welcome all into this warm gathering place.



Capital Improvement Projects

PenMet Parks is proud to share lots of exciting news and updates! Thanks for your curiosity and support. If you have more questions after reading this update, please contact Sue O'Neill, Director of Park Services.

Upcoming Park Improvements and Closures



We have continued to make park improvements, including sealcoating and striping the roads and parking spaces at Sehmel Homestead Park and we replaced the top railing on the Fox Island Fishing Pier. Both projects look great!

Narrows Park will be closed October 1-4 and 7 for pavement improvements.



WOW!!!

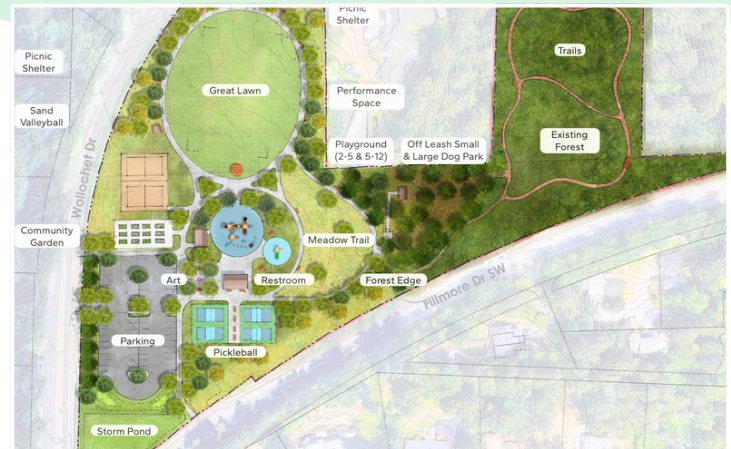


Peninsula Gardens: Master Planning Process Wrapping Up

PenMet Parks is in the process of developing a Master Plan to guide the final design for the development of the former Peninsula Gardens property into a community park. The Peninsula Gardens Master Plan development is among the highest priorities in PenMet Parks' Capital Improvement Plan and Budget.

After months of public input, a Preferred Concept Alternative was presented at a public meeting on September 19th by consultant AHBL. A Draft Master Plan will be presented for Board consideration in November.

Stay up-to-date by joining the email list!



Capital Improvement Projects

Mini Golf Coming Soon!



We are excited to announce that we are starting to renovate and revitalize the mini golf course at the Recreation Center site. We look forward to inviting the community to play soon!



Recreation Center Update

The building's vertical components are largely installed. We are excited to begin the inside work that will shape the building interiors as we wrap up the exterior of the building. Check out the time lapse video below! Many hardscape features have been installed like curbs, parking lot islands, sidewalk, and several other features. Exterior hardscape work will continue through September and most of October. Offsite work at Tubby's Trail Dog Park is expected to be completed by October 30.



Dog Park Alternatives to Tubby's Trail Dog Park

While Tubby's Trail Dog Park is closed until the end of October, dog lovers can use the temporary off-leash dog area at Peninsula Gardens, or Rotary Bark Park. Please be sure to bring your own water bowls. See you there!



Become a Volunteer



Coach Rylan has been volunteering as a youth soccer coach for the last three years, and loves supporting the next generation of athletes develop new skills. He started when he was 6 years old and played all the way up to the professional post-collegiate level in Major League Soccer. For Rylan, it is all about having fun and helping kids get better at the things they love.

PenMet Parks has a variety of volunteer opportunities, so contact us to get started!

thank you



premier

silver



platinum



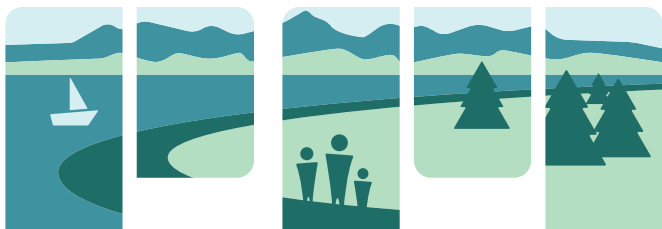
bronze



gold

event





PenMet Parks



2416 14th Ave. NW
Gig Harbor, WA



253-858-3400



info@penmetparks.org