

# PenMet Parks

*Parks &  
Recreation Guide*  
**SPRING 2021**

*Summer*  
**CAMP**  
GUIDE INSIDE



YOUTH | TEENS | ADULTS | SENIORS  
**253.858.3400 • PENMETPARKS.ORG**







## TABLE OF CONTENTS



3

**CONTACT/ADULTS**



4

**CURRENT PROJECTS**



5

**PARKS MAP**



8

**YOUTH SPORTS**



10

**SPRING BREAK CAMPS**



11-18

**SUMMER CAMP GUIDE**



19

**EVENT RENTALS**



21

**TEEN EVENTS**



22-23

**SPECIAL EVENTS**

## EMPLOYEE SPOTLIGHT RON MARTINEZ

The PenMet Board of Commissioners would like to recognize Ron Martinez for the Spring 2021 Employee Spotlight Award. Ron leads the Parks Services Department both by example and encouragement. He is committed to keeping our parks and amenities looking top-notch and providing every park visitor with a happy and memorable experience. Having served the District for over 10 years, Ron is one of PenMet Parks' most tenured employees. Whether making sure our playgrounds are being enjoyed by all who visit, or prepping fields for his favorite time of year (baseball), Ron always has a smile and a wave to all park patrons as he works to ensure you have safe and beautiful places to play at PenMet Parks.

**POSITION:** Parks and Facilities Manager

**PENMET PARK EMPLOYEE FOR:** 10 YEARS

**WHAT DO YOU LIKE MOST ABOUT YOUR JOB?**

One of my favorite things about my job is mowing the ballfields and hearing the sound of a baseball bat hitting the ball.

**WHAT IS YOUR FAVORITE THING ABOUT PENMET PARKS?**

I enjoy working with our great staff and interacting with the public. I enjoy hearing feedback from our visitors and what the people of our community have to say about our parks.





## CONTACT US

### ADMINISTRATION

253-858-3400 • Hours: 8am - 5pm  
5717 Wollochet Drive NW #3 Gig Harbor, WA 98335  
info@penmetparks.org

Mailing Address: PO Box 425 Gig Harbor, WA

Interim Executive Director: Hunter T. George  
hgeorge@penmetparks.org • 253-858-3400

Administrative Assistant: Stacie Snuffin  
SSnuffin@penmetparks.org • 253-313-5085

Human Resources/Finance: Elaine Sorensen  
ESorensen@penmetparks.org • 253-313-5087

Marketing/Communication: Chuck Cuzzetto  
CCuzzetto@penmetparks.org • 253-888-0649

### RECREATION

Interim Recreation Manager: Matthew Kerns  
mkerns@penmetparks.org • 253-649-0349

Special Events Coordinator: Kelly Darling  
KDarling@penmetparks.org • 253-649-0350

Special Populations: Denise Tremblay  
DTremblay@penmetparks.org • 253-649-5253

Community Recreation Specialist: Brycen Toney  
BToney@penmetparks.org • 253-649-0351

### MAINTENANCE & FACILITIES

10123 78th Ave NW, Gig Harbor, WA 98332

Parks and Facilities Manager: Ron Martinez  
RMartinez@penmetparks.org • 253-313-5093

Lead Grounds Specialist: Bob Swenson  
BSwenson@penmetparks.org • 253-313-5094

Facilities Rental Coordinator: Aiden Krug  
AKrug@penmetparks.org • 253-313-5090

### CAPITAL PROJECTS

Planning & Special Projects Manager: Eric Guenther  
EGuenther@penmetparks.org • 253-313-5086



## TEN TRAILS WALKING

Wednesdays March 17- May 19  
12:30- 1:30p • \$10 • ID# 4590

A walk in the great outdoors with others can help reduce stress and restore our mental health. Do you need an incentive to get out and about in nature? Join our Ten Trails Walking Club! We will explore ten trails over ten weeks.

PenMet staff will meet you at a designated park and offer a guided trail hike *for those who enjoy a faster pace* and a guided trail walk *for those who prefer modified activity* (walking poles available, if needed). Staff will provide the fun and motivation to do your personal best.

Participants receive prizes and a Ten Trails tee. Masks and distancing protocol required for all.



### IN-PERSON CLASSES

Want to join all of the LynnFit classes? Save money and sign up for the unlimited pass each month with access to 3 classes per week! You will be able to attend all four LynnFit classes: Cardio, and Gentle Yoga.

Rosedale Hall • Ages: 18+ • Fee \$45  
ID# 4563 3/1-3/31 8:30-9:30a M W F

### ALL ACCESS PASS

Attend unlimited "In person" Classes each month and enjoy having the flexibility to workout at home anytime with LynnFit On Demand. You will have access to our online fitness videos as well as be able to attend all three LynnFit classes

Rosedale Hall • Ages: 18+ • Fee \$55  
ID# 4562 3/1-3/31 8:30-9:30a M W F

### ONLINE PROGRAM

LynnFit "On Demand" is a video program that consists of various Workouts performed in our "in class" program as well as some classes geared just for "On Demand" such as "Fast and Fit" and "Tone In 20"

Online • Ages: 18+ • Fee \$40  
ID# 4456 4/5-4/26



## ADAPTIVE RECREATION

### SOCIAL CLUB

APRIL 2-JUNE 18 • ONLINE PROGRAM  
FRIDAYS 10-11a • AGES 18+ • FEE \$25

Social Club is a virtual social class for adults with intellectual disabilities to interact with old and new friends. We play interactive games, do crafts projects and sometimes we dance to music or have show and share days. This virtual club focuses on inclusion and helping participants learn virtual communications skills. All ability levels are welcome! A caregiver or a helper is encouraged to attend with the participant during this class if needed. This class is led by Denise Tremblay. Some supplies are provided. Participation is via Zoom on a home computer or tablet. ID# 4578

### DANCING AND MOVEMENT

APRIL 7-JUNE 16 • ONLINE PROGRAM  
WEDNESDAYS 10-11a • AGES 18+ • FEE \$22

Dancing and Movement is a virtual class for adults with intellectual disabilities who would benefit from instructions customized to participant's abilities. This fun class promotes fitness and social interactions through movement using ribbon sticks and hoops with lively music. In the second half of the session we focus on socialization through games and activities. All ability levels are welcome! Instructor Denise Tremblay provides encouragement and strategies to promote participation. Ribbon stick, hoop and supplies provided. Participation is via Zoom on a home computer or tablet. ID# 4580





# CURRENT PROJECTS

The Peninsula Metropolitan Park District (PenMet Parks) is committed to creating, improving, and maintaining high-quality parks and park facilities. This is accomplished through the District's Capital Facilities Plan (CFP) and the Capital Improvement Plan (CIP). The CFP is part of the District's long-range planning efforts reviewed every six years. The CIP is part of the District's short-range planning efforts examined annually. The

Capital Plans provide an opportunity to maintain, update, and identify capital projects and acquisitions. Through project planning, the District is able to schedule and identify options for financing in order to create a comprehensive and strategic plan for the future. Please see below for an outline of current projects.

For more information please email [info@penmetparks.org](mailto:info@penmetparks.org) or call 253-858-3400



## PENMET PARKS FINALIZES COMMUNITY RECREATION CENTER FEASIBILITY, CONCEPT DESIGN, AND PROFORMA REPORT

Design for PenMet Parks future Community Recreation Center is underway. Currently in the schematic design phase, the project's vision is to create an inclusive facility that supports the well-being of the whole community; a place where memorable experiences will be created. The approximately 64,000 square foot Center is anticipated to provide indoor recreation opportunities such as a turf field, multi-purpose courts, and a walk/jog track, along with community spaces and the District administrative offices. Outdoors, the Cushman trail will be extended through the site, which features an activity lawn. The design will accommodate future potential expansion of the Center. The planned facility is located at 2416 14th Avenue NW, at the former Performance Golf Center site, which the District purchased in 2019.

The design team – led by BLRB Architects

and Barker Rinker Seacat Architecture (BRS) – began work on the Feasibility, Concept Design, and Proforma report in the summer of 2020. The public was engaged throughout the process, which included a series of open meetings and a Steering Committee comprised of community members. The study includes an operational analysis and business planning proforma of expenses and revenue potential. This study's outcome is that there is a high level of confidence that PenMet can support a new community recreation center with the program outlined in this report.

For updates or to review this report and other project information, please visit <https://penmetparks.org/current-projects/>

Public comment is welcome. You can share your thoughts or ask questions by emailing [info@PenMetParks.org](mailto:info@PenMetParks.org).

## HALE PASS PROJECT

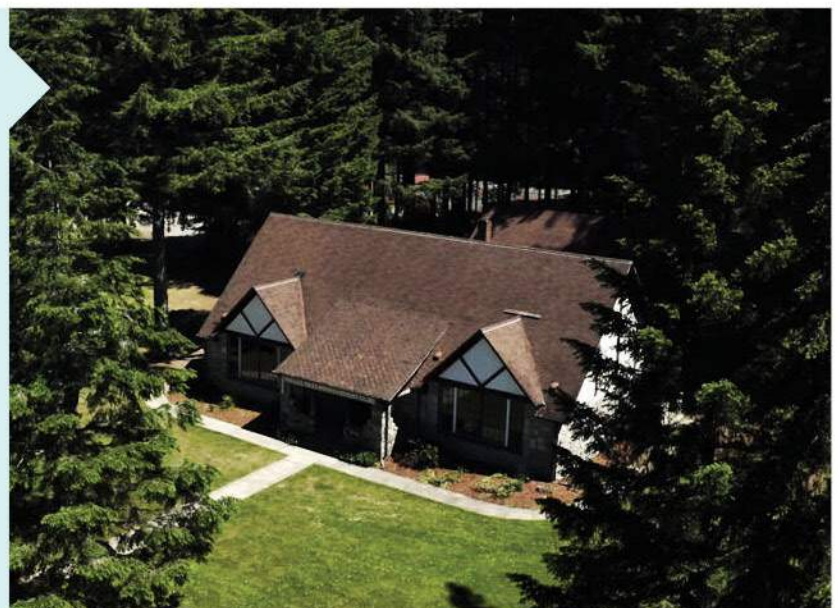
Renovations on the Arletta Schoolhouse at Hale Pass Park are anticipated to start in 2021. Originally built in 1938, upgrades will address ADA access for the building and restrooms, ingress and egress, upgrades to plumbing and electrical systems, and building structural improvements. Plans also include revising the building layout so that visitors will not need to exit through a classroom or a restroom. The kitchen and restrooms also will receive significant upgrades.

Following several reviews of the assessment, PenMet staff has

worked with Driftmier Architects to develop a renovation plan that improves the user experience and addresses aging systems while maintaining the historic character of the building exterior.

The entire park covers over 4 acres, including a ball field, picnic shelter, tennis courts, forest land, and the Arletta Schoolhouse. This facility is currently closed for renovations and upgrades.

For more information, please visit <https://penmetparks.org/current-projects> or email [info@penmetparks.org](mailto:info@penmetparks.org) or call 253-858-3400







**Sehmel Homestead Park**  
10123 78th Ave NW

**Sunrise Beach Park**  
10015 Sunrise Beach Dr NW

**McCormick Park**  
10301 Bujacich Rd

**Rotary Bark Dog Park**  
10100 Bujacich Rd

**Rosedale Park and Hall**  
8205 86th Ave NW

**Hales Pass**  
3607 Ray Nash Dr NW

**Harbor Family Park**  
6620 32nd St NW

**Tacoma DeMolay Sandspit Nature Preserve**  
53 Bella Bella Drive Fi

**Madrona Links**  
3604 22nd Ave NW

**Narrows Park**  
1502 Lucille Pkwy NW

**Tubby's Trail Dog Park**  
1701 14th Ave NW

**Fox Island Fishing Pier**  
1453 Ozette Drive Fi

**Community Recreation Center / Mini Golf**  
2416 14th Ave NW



# Take a Hike!

## SUNRISE BEACH

110015 Sunrise Beach Drive NW • Gig Harbor, WA 98335

All parks are open 7 am to dusk. Sunrise Beach Park is an 82-acre scenic site with 2,135 linear feet of shoreline. The beach provides access to a popular scuba diving destination. With a breathtaking meadow and some of the best low tide viewing in the area. This park is a must-visit for a picnic or family outing.

**Developed Areas:** The 6 acre beachfront portion of the park includes designated parking areas, 6 picnic tables, day-use areas, 2 miles of walking trails and forest paths with views of Mount Rainier and Puget Sound, and beach access to the 2,400 linear foot shoreline on Colvos Passage.

**Undeveloped Areas:** There are 5 separate land parcels separated by public roads. Most of the property is located on the plateau between Sunrise Beach Drive and Moller Road. The plateau property consists of meadow with views of the Puget Sound and dense woodland stands with a wetland swamp.

## STORY WALK!

APRIL 15 - MAY 31  
THE MAIN TRAIL BEHIND THE PLAYGROUND  
AT SEHMEI HOMESTEAD PARK

Walk along the trail enjoying nature and reading a children's book on this self-guided story walk. The featured book is: *The Big Umbrella* by Amy June Bates.

*In partnership with the Pierce County Library System – Gig Harbor Branch*







## MADRONA LINKS GOLF COURSE

Let's hit the links! This 18-hole golf course was designed to cater to all golfers by creating a fun and user-friendly course. Madrona prides itself on our club atmosphere where the course and greens are always well manicured and groomed for your golfing pleasure. Located in Gig Harbor, the course is conveniently located on the peninsula with easy access to Tacoma Narrows and Highway 16.

The layout has a classic links design that is player-friendly enough for players of all skill levels. Small, deep bunkers frame both the greens and fairways. This popular course is one of the best values in the area.

*Madrona Links is owned by PenMet but operated by a third party.*

To learn more:

[www.madronalinks.com](http://www.madronalinks.com) • (253) 851-5193  
3604 22nd Ave NW • Gig Harbor, WA 98335

**NOW  
OPEN!**

Putt around with  
PenMet Parks!



## We are pleased to announce Mini-Golf is BACK!

With 18 holes of fun, bring the family, bring a friend or brush up on those short game skills!

**BY RESERVATION ONLY CALL 253-858-3400**

### HOURS

WEEKDAYS • 12p - 8p  
SATURDAYS • 12p - 10p  
SUNDAYS • 12p - 9p

### RATES

SENIOR/MILITARY • \$7.50  
ADULTS (17+) • \$8.50  
YOUTH • \$6.75  
SECOND ROUND • \$4.50

## FREE MINI GOLF DAY • MAY 18

### COMMUNITY RECREATION CENTER

IT'S NATIONAL MINI GOLF DAY AND WE WANT TO CELEBRATE!

Registration opens Apr 5, 2021

Join us for a free round of mini golf on our 18-hole putting course. The course will feature fun summer decorations, family friendly music, and free popcorn.

ID# 4545 11a-12p  
ID# 4546 12-1p  
ID# 4547 1-2p  
ID# 4548 2-3p

ID# 4549 3-4p  
ID# 4550 4-5p  
ID# 4551 5-6p  
ID# 4552 6-7p





## BASEBALL

**SEASON APRIL 5 - JUNE 12**

Weekly practice times vary • Games: Saturdays between 9a - 4p

Swing for the fences with PenMet Recreational Baseball and Tee Ball! Designed for children of all skills and abilities, with an emphasis on teaching baseball techniques, principles, team play, and sportsmanship.

Season includes 8 games, weekly practice, and a PenMet shirt. Practices begin the week of April 5th, and games begin Saturday, April 10th.

Coaches will provide practice dates and game schedule during the first week of April. Teams can expect 1 hour of practice each week and one game on Saturdays. All participants will be registered first to a waitlist. You will be called to register and pay for the activity in March dependent on the number of coaches. **NOTE: Games will only occur if our region is in Phase 2 of the Healthy Washington Roadmap to Recovery Plan.**

## TEE BALL KINDER-1ST

Often a player's first introduction to the sport of baseball or softball, PenMet Tee Ball is all about understanding the game, fun, and making friends. No prior experience is expected or required. The Tee Ball program is focused on teaching basic baseball skills such as fielding and batting in a casual environment.

**Hales Pass • Fee: \$130**

ID# 4405



## COACH PITCH - 2ND & 3RD

Coach-pitch is a technique where players under nine years old bat a baseball that is safely pitched to them by their own coach. Designed for children of all skills and abilities, with an emphasis on teaching baseball techniques, principles, team play, and sportsmanship. At the Coach Pitch level a safety ball will be used since this will be the first time children will be pitched to versus hitting from a tee. As with Tee Ball the primary objective at this level is to ensure that each player has a positive experience with baseball, and desires to play again the following year.

**Sehmel Homestead Park • Fee \$140**

ID# 4406

## PLAYER PITCH - 4TH & 5TH

Designed for children of all skills and abilities, with an emphasis on fun, participation and teamwork. Participants are guaranteed playing time in the field and at bat. During the regular season, coaches are strongly encouraged to emphasize player instruction to ensure all players are having fun and developing the skills needed to grow their passion for Baseball or Softball.

**Sehmel Homestead Park • Fee \$150**

ID# 4407

## SKYHAWKS

### SOCCER CLINIC

Skyhawks is the nation's #1 camp for learning the fundamentals of soccer. Using our progressive curriculum, boys and girls will gain the technical skills & sport knowledge required for that next step into soccer.

**Sehmel Park Field #3**

**Ages 4 to 6 • Fee \$49**

ID# 4445 4/19 to 5/10  
5:30-6:15p M

**Sehmel Park Field #3**

**Ages 7 to 12 • Fee \$49**

ID# 4446 4/19 to 5/10  
6:30-7:15p M



### BASKETBALL CLINIC

This fun, skill-intensive program is designed for beginning to intermediate athletes. An active week of passing, shooting, dribbling and rebounding makes this one of our most popular programs. Boys and girls will also learn vital life lessons such as respect, teamwork and responsibility.

**Sehmel Park Basketball Court**

**Ages 4 to 6 • Fee \$49**

ID# 4470 5/17 to 6/7 5:30-6:15p M

ID# 4472 5/17 to 6/7 6:30-7:15p M

### TENNIS CLINIC

In Skyhawks tennis programs, boys and girls learn proper grips, footwork, strokes, volleys and serves, as well as the rules and etiquette that make tennis an exciting game. Programs fill quickly due to limited court space.

**Sehmel Homestead Park Tennis Court #1**

**Ages 5 to 11 • Fee \$49**

ID# 4467 5/17 to 6/7 4:30-5:15p M



PenMet will continue to follow our Safe Start Plan for youth sports. Facial coverings are required for all coaches, volunteers, and athletes at all times. Spectators must always maintain a physical distance of at least six (6) feet between each person and wear facial coverings.



## STEM WITH SNAPOLOGY

### JR. ENGINEERS

Join us as we build functional LEGO or DUPLO models of cranes, mixers, swings, and so much more! All models/builds are new & different from our fall programming. As your learner works alongside other little engineers, they will be learning the importance of teamwork and how collaboration is an essential component of engineering and design.

**Sehmel Park Pavilion**  
**Ages 3 to 6 • Fee \$80**

ID# 4417 4/1 to 5/6 3-4p Th

ID# 4418 5/13 to 6/10 3-4p Th

### MECHANICAL MASTERMINDS

This program gives your student the tools they need to understand mechanical movement through the foundations of simple machines, physics, and engineering design. They will see moving parts up-close as they follow instructions to build various machines, then use the models to develop new design ideas, test out physics concepts, and even play games with their partners and classmates.

**Sehmel Park Pavilion**  
**Ages 8 to 14 • Fee \$80**

ID# 4420 4/1 to 5/6 4:30-5:30p Th

### SUPERHEROES!

To the Batcave, LEGO fans! Design your own superhero, create your own adventure, and build epic battle scenes. Have a blast as you create your own fantasy world of superheroes and supervillains, straight out of the pages of DC and Marvel comic books. You might even unleash some of your own superpowers!

**Sehmel Park Pavilion**  
**Ages 5 to 14 • Fee \$80**

ID# 4419 5/13 to 6/10 4:30-5:30p Th

## BRICKS 4 KIDZ

### BRICK BUILD-ALONG: ONLINE STEM PROGRAM

What are you creating with that big box of miscellaneous LEGO Bricks? Wish you could build with friends and be challenged to do something unique? Join us LIVE INTERACTIVE ONLINE as we meet once a week to learn and build the challenge of the day! We will meet virtually over Zoom to create, build and share fun and exciting projects using Bricks you have at home. Classes will include group learning time, instructor-led building of the project of the day and sharing what you've built with other students in the virtual classroom. Requires Zoom (free), and whatever LEGO Bricks you have at home. Upon registration, we will email you the meeting link and preparation instructions.

**Fee \$80**

ID# 4380 4/20-5/25 4-5p Tu

AGES  
6-10

### VIRTUAL AI: ONLINE STEM PROGRAM

Want to learn about Artificial Intelligence? In this 6-week class, you will be introduced to the hottest AI topics, including machine learning, path planning, and more. You will learn to code in Calypso, an AI programming software, where you will teach Cozmo the virtual robot to do things like navigate a maze and recognize speech commands. Requires Zoom (free) and a browser. Upon registration, we will email you the meeting link and preparation instructions

**Fee \$80**

ID# 4384 4/22-5/27 4-5p Th

AGES  
8-14

## VIRTUAL TECHNIC STUDIO: ONLINE STEM PROGRAM

This LIVE INTERACTIVE ONLINE Virtual Classroom offering Bricks 4 Kidz curriculum uses a virtual desktop application that allows users to build our unique Bricks 4 Kidz models using virtual LEGO parts from our project kit. Students will learn important concepts of STEAM education by examining the construction of the model of the day and discussing a lesson related to it. Then, students will virtually build it themselves using our ?digital? project kit and following along with the instructor. When complete, students will have the freedom to make the changes in their own build (including changing colors and adding additional parts and pieces to change the original design). Participating in this virtual class will also give students a better understanding of how to work with studio design software such as Auto Cad and even 3D printing. ? Requires Windows or OS-X, Zoom (free), and Bricklink Studio 2.0 (free) installed. Upon registration, we will email you the software and meeting links and preparation instructions.

**Fee \$80**

ID# 4382 4/21-5/26 4-5p W

AGES  
6-12

## BUILDING FUN VIDEO GAME CHARACTERS

It's time for your child to have fun building some exciting LEGO? models and socialize (safely) with other LEGO-loving kids. Each week, kids will have an awesome hands-on experience creating their favorite video game characters such as a running & jumping Mario, a springing Sonic, a mining Steve, a battle royale Glider, and more, using LEGO Technic bricks and motors. Plus, every kid takes home a custom mini-figure! Note, all recommended health safety measures will be followed, depending upon current county phase, which may include social distancing, wearing masks, and cleaning.

**Sehmel Park Pavilion • Fee \$80**

ID# 4378 4/19-5/24 4-5p M

AGES  
6-12



# STEM CAMPS



## SNAPOLOGY

At Snapology we help your child grow up with a thirst for knowledge. How do we do it? Snapology engages children ages 1- 14 using LEGO bricks, K'Nex and technology. While the kids are having fun with familiar toys, laptops and iPads, we sneak in the educational concepts. Shh, don't tell them it's educational!

### JR. SCIENTIST: ALL ABOUT ANIMALS

All About Animals invites your little zoologists to analyze the differences between vertebrate and invertebrate, construct their way through the butterfly and frog life cycle, build reptiles, and examine the differences and similarities between insects and arachnids using Kid K'NEX pieces.

**Sehmel Park Pavilion • Ages 3 to 6 • Fee \$195**

ID# 4423 4/12 to 4/16 9a-12p M-F

### KINDERBOTS ROBOTICS

Children will begin to explore the world of robotics and coding as they build simple models that teach the fundamentals of robotic design. Whether learning about sensors while building drills and magic wands, or discovering ways that gears and pulleys create movement while building helicopters and robotic dogs, your child is sure to have a great time.

**Sehmel Park Pavilion • Ages 3 to 6 • Fee \$195**

ID# 4426 4/12 to 4/16 1-4p M-F

### ANIMATION STUDIO

Who doesn't love an action-packed animation movie that brings our favorite toys to life? In Snapology's Animation Studio program, students will work in teams to learn the fundamentals of stop motion animation and develop their own animated movie starring some of their favorite LEGO mini-figures! The best part, their movie will move beyond the classroom and be uploaded to Snapology's YouTube channel to share with friends and family!

**Sehmel Park Pavilion • Ages 7 to 14 • Fee \$195**

ID# 4422 4/12 to 4/16 1-4p M-F

### ATTACKBOTS

In this exciting camp, students will build a variety of military-inspired robotic models. Children will learn about sensors, gears, pulleys, and programming as they create robotic catapults, crossbows, battleships and much more!

**Sehmel Park Pavilion • Ages: 7 to 14 • Fee \$195**

ID# 4421 4/12 to 4/16 9a-12p M-F

## BRICKS4KIDZ

We believe there is a scientist or mathematician in every single student. Through creative activities, structured play and carefully designed educational materials, we strive to inspire budding STEM experts.

### FULL DAY SPRING BREAK

Building all day with LEGO Bricks, motors, and mosaics? It's like a dream come true! Enjoy both the morning Star Wars-themed camp and afternoon animated-movie-themed camp plus early drop-off, late pick-up, and supervised lunch, all at a discounted fee. Please bring a lunch.

**Community Recreation Center • Ages: 6 to 12 • Fee \$295**

ID# 4376 4/12 to 4/16 8:30a-4:30p M-F

### GALAXY FAR AWAY

Awaken the force of building with LEGO Bricks, creating star ships and characters inspired by Star Wars?. In addition, we'll build famous historic NASA space program vehicles such as the Redstone Rocket and Gemini Capsule. Dynamic motorized models and artistic mosaics, too, of course. Don't be the last Jedi to experience this stellar journey to a galaxy far away!

**Community Recreation Center • Ages 6 to 12 • Fee \$195**

ID# 4374 4/12 to 4/16 9a-12p M-F

### MOVIE MASHUP

Kids will love this mash-up camp building motorized and character figure builds using LEGO Bricks inspired by popular animated movies! Building enthusiasts will have a large variety of options from popular movies to choose from including: Emmet and Lucy, Woody and Buzz, Toothless and Hiccup and more! The choice is yours at this super fun week of building specially-designed Bricks 4 Kidz motorized models, mosaics, 3D models, and playing LEGO-themed games.

**Community Recreation Center • Ages: 6 to 12 • Fee \$195**

ID# 4375 4/12 to 4/16 1-4p M-F

**For Questions  
or to Register:  
253.858.3400 or  
recreation@penmetparks.org**





# PENMET PARKS Summer Camp Guide

REGISTER AT [WWW.PENMETPARKS.ORG](http://WWW.PENMETPARKS.ORG)  
OR CALL 858-3400

## SPECIALITY CAMPS

### MERMAID BEACH

Ever dream being a part of Ariel's world? Now you can at Mermaid Beach Camp. Mermaids will enjoy treasure hunts, seaworthy crafts, water games, and more beach fun! A snack and juice will be provided each day. Make sure to register early, this is one of our most popular camps. Camp fills quickly, limited spots available.

**DeMolay Sand Spit Nature Preserve • Fee \$99**

ID# 4448 6/28 - 7/1 1-4p M-Th

AGES  
5-7

### FAIRY HOLLOW

At Fairy Hollow Camp, you will be immersed into the lives of fairies. Create your very own fairy wings, participate in fairy hunts, build a home for them, and learn to care for fairy flowers. Enjoy additional themed games and crafts throughout the week.

**Sehmel Park Pavilion • Fee \$149**

ID# 4460 6/28 - 7/2 9a-12p M-F

ID# 4461 8/16 - 8/20 1-4p M-F

AGES  
5-7

### BEST OF THE BEST SUMMER

Play the best of the best camp and team games, crafts and challenges including a water day and Camp Olympics! Your camper will sure to be entertained from drop off to pick up.

**Rosedale Hall • Fee \$149**

ID# 4450 7/6 - 7/9 9a-4p Tu-F

AGES  
6-12

### SUPERHERO TRAINING

Join us for a week of action packed fun and learn what a typical day in the life of Superhero is. Our Marvels will have the opportunity to make their way through obstacle courses, design and create their own cape, shield, mask and tie dye shirts. They'll also participate in themed experiments, crafts, and group games. A snack and juice will be provided each day. Please bring a t-shirt to be tie dyed on the first day.

**Rosedale Hall • Fee \$99**

ID# 4452 7/12 - 7/15 9a-12p M-Th

AGES  
5-9

### THE (NOT TOO) DANGEROUS CAMP FOR BOYS

Have you ever wondered how to make the perfect airplane? Do you know how to navigate when lost in the woods? This camp is for boys who want to learn about the outdoors from how to make a periscope to exciting science projects. Have fun exploring the activities in "The Dangerous Book for Boys."

**Sehmel Park Pavilion • Fee \$149**

ID# 4462 7/12 - 7/16 9a-12p M-F

AGES  
5-7

### THE DARING CAMP FOR GIRLS

At The Daring Camp for Girls, campers will learn everything they need to know from historic female heroes to how to survive in the wilderness. Participate in science projects, create friendship bracelets, and explore the park trails. Girls will take home a new knowledge each day as well as partake in nature based projects. Have fun exploring the activities in "The Daring Book for Girls."

**Sehmel Park Pavilion • Fee \$149**

ID# 4463 7/12 - 7/16 1-4p M-F

AGES  
5-7

### MAD SCIENTIST

Get blown away and become a scientist for a week! Scientists will conduct explosive experiments, create catapults and rocket-ships, get slimy, become a crime scene investigator, and participate in edible engineering. A snack and juice will be provided each day.

**Sehmel Park Pavilion • Fee \$119**

ID# 4579 7/19 - 7/23 9a-12p M-F

AGES  
7-12





# Summer Camp Guide

REGISTER AT [WWW.PENMETPARKS.ORG](http://WWW.PENMETPARKS.ORG) OR CALL 858-3400

## JEDI TRAINING

Join us as we travel to a galaxy far far away! Begin the week as a Padawan preparing to begin their Jedi training. Campers will be challenged through daily Star Wars themed crafts, games, and experiments. A snack and juice will be provided each day.

DeMolay Sand Spit Nature Preserve • Fee \$99

ID# 4475 7/19 - 7/22 9a-12p M-Th

AGES  
5-9



## AMERICAN DOLL

Grab your favorite 18 inch doll and join us for American Doll Camp! Get ready for an exciting week of crafting, baking, and playing. Each day campers will make crafts and accessories for their dolls, play games and learn to bake easy desserts. We will also learn about a historical figure doll and her time period each day. On Friday, we will enjoy a tea party with our dolls!

Rosedale Hall • Fee \$199

ID# 4455 7/26 - 7/30 9a-4p M-F

AGES  
6-12

## FANTASTICAL UNICORNS

Join us for a week of magic and sparkle of all things Unicorn! Each day campers will dive into the world of Unicorns with themed crafts, games, and non-bake baking. We will also create our own magical stories and slime! The last day of camp, we will enjoy a tea party.

DeMolay Sand Spit Nature Preserve • Fee \$99

ID# 4474 8/2 - 8/6 9a-12p M-F

AGES  
5-7

## GAMES GALORE

Enjoy a fun filled week playing indoor and outdoor games. Campers will participate in team games, obstacle courses, Minute to Win It games, Park games (kickball, volleyball etc.) and our very own Summer Olympics. On the last day, we will enjoy water games! A snack and juice will be provided each day.

Sehmel Park Pavilion • Fee \$149

ID# 4457 8/2 - 8/5 9a-4p M-TH

AGES  
6-12

## WIZARDING WORLD OF HOGWARTS CAMP

Hogwarts is coming back to Gig Harbor for another magical packed week. In the course of a week, we will pack as many Harry Potter themed activities as humanly (or wizardly) as possible. Attend Hogwarts classes each day with your house and play games, make crafts, and conduct experiments. Enjoy the Tri Wizard Tournament and Yule Ball on the last day. Mischief Managed.

Community Recreation Center • Fee \$230

ID# 4453 8/16 - 8/20 9a-4p M-F

AGES  
8-13

## FANTASY ADVENTURE

Unleash your imagination as we explore various magical worlds. Start the week off at Hogwarts. Wizards and Witches will attend classes with their houses, play Quidditch, and enjoy a trip to Diagon Alley. We'll then soar our way into the world of Disney and Fairytales. Campers will go on treasure hunts, conduct experiments, and enjoy themed crafts and games. On Friday, we will enjoy a Tri Wizard Tournament and attend our very own Yule Ball. A snack and juice will be provided each day.

Community Recreation Center • Fee \$230

ID# 4454 8/23 - 8/27 9a-4p M-F

AGES  
5-7





## LITTLE CAMPERS

AGES  
3-5



Specially designed for our littlest campers ages 3 - 5, we are excited to introduce our Little Campers Summer Camps! A snack and juice will be provided each day. Campers must be potty trained.

### TRUCKS, CARS, & BOATS

Vroom! Honk! Splash! Start your engines and learn about motor vehicles of all kinds with this three day preschool camp. Play games and build crafts that explore wheels, boats, and everything in between. A snack and juice will be provided each day. Campers must be potty trained.

**Rosedale Hall • Fee \$79**

ID# 4449 6/28 - 6/30 1-4p M Tu W

### UNDER THE SEA

Explore and learn what is under the sea with our fun, three day preschool camp on Fox Island. Play beach games, create crafts, and comb the beach. A snack and juice will be provided each day. Campers must be potty trained.

**DeMolay Sand Spit Nature Preserve • Fee \$79**

ID# 4451 7/6 - 7/8 9a-12p Tu W Th

### LIL HEROES

Being little doesn't mean that you aren't mighty! Join us some action packed fun and learn what a typical day in the life of Superhero is. Our preschoolers will have the opportunity to make their way through obstacle courses, design and create their own cape, shield, mask. They'll also participate in themed experiments, crafts, and group games. A snack and juice will be provided each day. Campers must be potty trained.

**Rosedale Hall • Fee \$79**

ID# 4459 7/12 - 7/14 1-4p M Tu W

### LIL SCIENTISTS

Join us for a week packed with fun and learning! Our preschoolers will have the opportunity to make slime, do fizzy experiments and other scientific activities. They'll also participate in themed crafts, and group games.

**Sehmel Park Pavilion • Fee \$79**

ID# 4582 7/19 - 8/21 1-4p Tu W Th

### SUMMER FUN

Join us for our preschool summer camp! Our little campers will have a blast celebrating Summer with new crafts and games each day. Mix up crazy concoctions, participate in water obstacle course, go on a scavenger hunt, and more! A snack and juice will be provided each day. Campers must be potty trained.

**DeMolay Sand Spit Nature Preserve • Fee \$79**

ID# 4476 8/9 - 8/11 9a-12p M Tu W

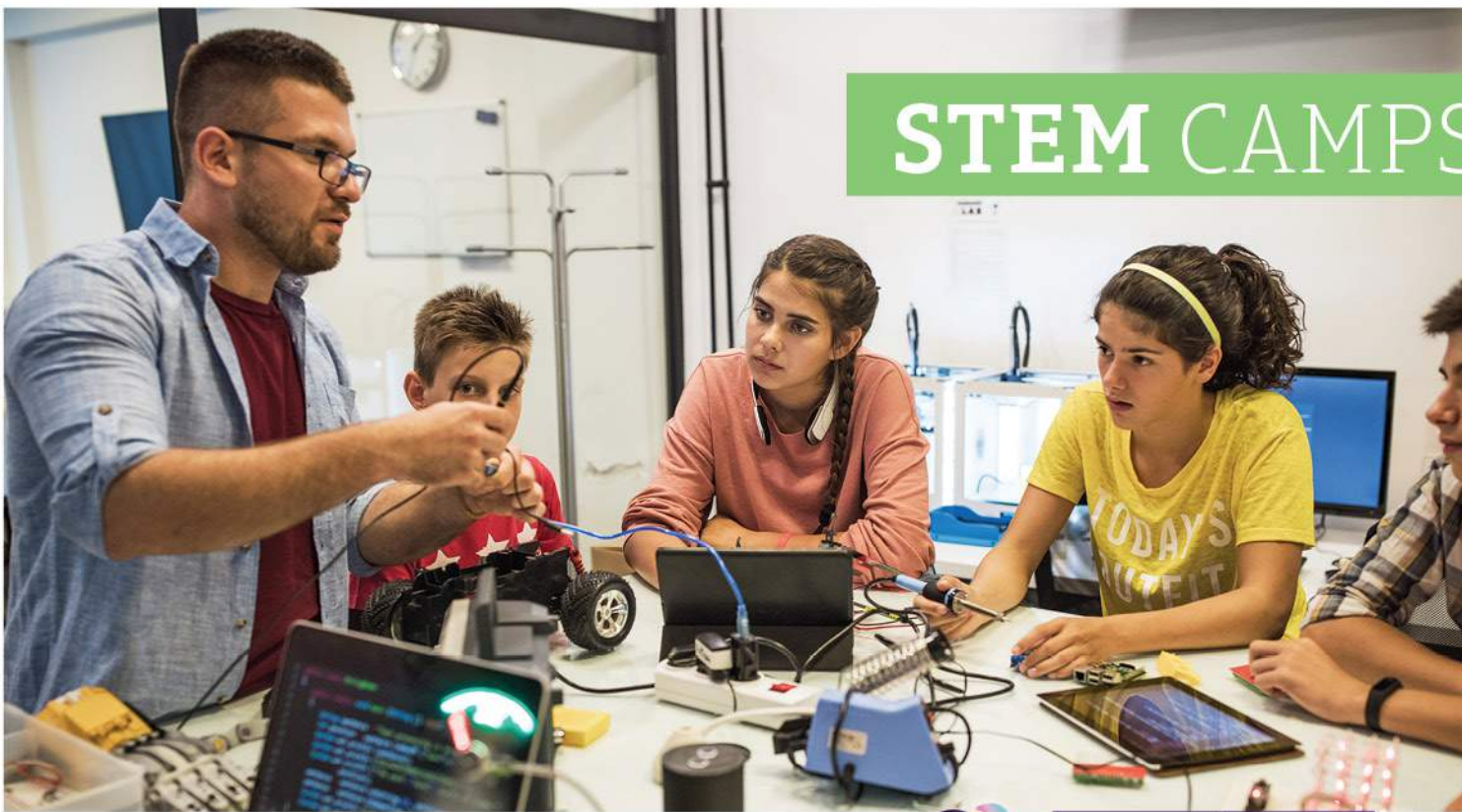
### ELVES, DRAGONS, AND TROLLS, OH MY!

Magic and wonder come to life! Our little campers will explore a world of mythical creatures, magic, and myths with exciting crafts and games.

**DeMolay Sand Spit Nature Preserve • Fee \$79**

ID# 4581 8/2 - 8/4 1-4p Tu W Th





## STEM CAMPS

### BRICKS 4 KIDZ

At Bricks 4 Kidz, we believe there is a scientist or mathematician in every single student. Through creative activities, structured play and carefully designed educational materials, we strive to inspire budding STEM experts. All campers make and take home a custom mini-figure and photo collage of the week's experience. Please bring your own lunch, snack, and water bottle.

### FULL DAY STEM CAMP

The LEGO building and fun don't stop in this all-day Bricks 4 Kidz camp! In the morning, experience the Space Pioneers Robotics Camp, building and programming space-themed robots, and in the afternoon enjoy the Video Game Design Camp, coding video games featuring virtual LEGO models. Plus 1/2 hour early drop-off, lunch hour, and 1/2 hour late pick-up all included at a discounted price.

**Community Recreation Center • Fee \$280**

ID# 4471 7/6 - 7/9 8:30a-4:30p Tu-F

AGES  
6-12

### MINING & CRAFTING INSPIRED BY MINECRAFT

Experience the world of Minecraft with LEGO Bricks in this fun camp! Minecraft is a game about placing blocks to build anything you can imagine. At night monsters come out, make sure to build a shelter before that happens. Kids will start by crafting their shelters and some of the mobs, critters and tools using LEGO Bricks. Campers will face new challenges each day, building models and crafting key elements from the popular Minecraft game.

**Community Recreation Center • Fee \$210**

ID# 4473 8/9 - 8/13 1-4p M-F

AGES  
6-12



### SPACE PIONEERS ROBOTICS

Campers will become space pioneers and will travel on spaceships to different planets to start colonizing new worlds. We will build robots that will assist us in surviving these new harsh and difficult environments. Each day, campers will build and program special robots with innovative designs to overcome all the obstacles that come with being space adventurers. And in the process, they will acquire and understand the responsibilities of engineers, programmers, designers, and researchers.

**Community Recreation Center • Fee \$170**

ID# 4468 7/6 - 7/9 9a-12p Tu-F

AGES  
7-14

### VIDEO GAME DESIGN

Bring virtual LEGO Bricks to life through coding! Campers will create video games that will help them develop a range of coding and problem-solving skills and also help them when they later move onto real-world computer programming. Game Designers think creatively, reason systematically, and work collaboratively to create fun video games. Campers also build and keep a mini model that is the main character of all the games in this Bricks 4 Kidz camp.

**Community Recreation Center • Fee \$170**

ID# 4469 7/6 - 7/9 1-4p Tu-F

AGES  
7-14



## STEM CAMPS

### SNAPOLGY

At Snapology we help your child grow up with a thirst for knowledge. How do we do it? Snapology engages children ages 1- 14 using LEGO® bricks, K'Nex and technology. While the kids are having fun with familiar toys, laptops and iPads, we sneak in the educational concepts. Shh, don't tell them it's educational! All campers will receive a Snapology summer camp t-shirt or a small building kit.

### ROBO-PETS

Children will begin to explore the world of robotics as they build simple animal models that teach the fundamentals of robotic design. Whether learning about sensors while building a fish or alligator or discovering ways that gears and wheels and axles create movement while building robotic dogs or frog, your child is sure to have a great time!

**Community Recreation Center • Fee \$195**  
ID# 4480 6/28 - 7/2 9a-12p M-F

AGES  
3-6

### JUNIOR CREATOR CLUB

Little learners will explore and be amazed at what they can create! Your child will participate in various creative play activities designed to promote the creative, social, and expressive skills. Through building with LEGO® DUPLO®, imaginative play, and stories, your learner won't even realize how much they are learning!

**Community Recreation Center • Fee \$195**  
ID# 4481 6/28 - 7/2 1-4p M-F

AGES  
3-6

### DRONE COMMANDER

In Snapology's Drone Commander camp, your student will be introduced to the world of Unmanned Aerial Vehicles (UAVs) and develop a deep understanding how to control and manage this exciting technology. This workshop will give your student the chance to safely test out some of the newest advances in aerial flight and really take their knowledge of engineering to new heights!

**Community Recreation Center • Fee \$215**  
ID# 4485 7/12 - 7/16 1-4p M-F

AGES  
9-14

### STEAM SURVIVOR

S.T.E.A.M. Survivor camp will put your child's design, building, and critical thinking skills to the test! They will be given daily challenges for which they must design functional solutions with their teammate! They will then earn Survivor Bucks use those survivor bucks to purchase supplies or prizes. The goal of this program is to encourage our campers to carefully work through the engineering design process to see how often they can design with a purpose.

**Community Recreation Center • Fee \$195**  
ID# 4484 7/12 - 7/16 9a-12p M-F

AGES  
7-12

### JUNIOR ENGINEERS

This program will give your student opportunities to build functional LEGO DUPLO models of elevators, amusement park rides, robotic dogs, spinning tops, and so much more! As your learner works alongside other little engineers, they will be learning the importance of teamwork and how collaboration is an essential component of engineering and design.

**Community Recreation Center • Fee \$195**  
ID# 4483 7/26 - 7/30 1-4p M-F

AGES  
3-6

### PLANES, TRAINS, & AUTOMOBILES

Cars, buses, trains, and airplanes are all important for communities and the world to stay connected. In this camp, your little learners will explore the importance of transportation, build models of cars, trains, boats, and more. Most importantly, they will experience important social interactions while working with a partner and learning with the group.

**Community Recreation Center • Fee \$195**  
ID# 4482 7/26 - 7/30 9a-12p M-F

AGES  
3-6

### ANIMATION STUDIO

In Snapology's Animation Studio program, students get to do more than just enjoy those movies, they get to create them! In this technical program, children will work in teams to learn the fundamentals of stop motion animation and develop their own animated movie starring some of their favorite LEGO mini-figures! Students will go through the entire movie making process with their filming partner, from plot development and set design to detailed visual and audio editing.

**Rosedale Hall • Fee \$195**

ID# 4488 8/16 - 8/20 1-4p M-F

AGES  
7-14

### COMBAT ROBOTS

Do you think your child can build the strongest and most agile robot? Can their robot win a head-to-head combat mission? Your child will discover basic strategies for building sturdy structures and then apply that knowledge to build a robot for friendly competition. They should be prepared to have tons of fun!

**Rosedale Hall • Fee \$195**

ID# 4487 8/16 - 8/20 9a-12p M-F

AGES  
7-14



## TOTS ON THEIR TOES

### DISNEY BALLET

Get ready for fun magical crafts, dances, and stories - straight out of your favorite Disney books! Our ballet camp will feature stories like Beauty and The Beast, The Little Mermaid, and Moana. Dancers will perform what they learned on the last day.

Rosedale Hall • Fee \$99

ID# 4493 7/19 - 7/22 9-10:30a M-Th

Fee \$129

ID# 4495 8/2 - 8/6 9-11a M-F

ID# 4496 8/9 - 8/13 9-11a M-F

AGES  
3-5

AGES  
5-7



## GYMNASTICS, DANCE & THEATRE CAMPS

## HARBOR GYMNASTICS

### PRE-K, KINDER & 1ST

During this camp, children will practice locomotor activities, stationary and moving balance, bar strength and swinging, and fundamental gymnastics skills. Children will also continue to develop social skills through group games. Emphasis is placed on safe and proper technique all while having FUN!

Community Recreation Center • Fee \$149

ID# 4505 7/19 - 7/22 9a-12p M-Th

ID# 4506 7/19 - 7/22 1-4p M-Th

AGES  
4-6

### 1ST-5TH GRADE

This camp is designed for athletes of any sport who want to become stronger and acquire beginner to intermediate tumbling skills. Progressions for rolling, handstands, limbers, walk-overs, round offs, and back handsprings will be taught in a safe manner. Conditioning and flexibility will also be incorporated into lessons. Let's cartwheel to celebrate your success!

Community Recreation Center • Fee \$149

ID# 4507 8/2 - 8/5 9a-12p M-Th

ID# 4508 8/2 to 8/5 1-4p M-Th

AGES  
6-10

## FRENCH TOAST THEATER

### THE JUNGLE BOOK

Banished by the ferocious tiger, Shere Khan, a human boy named Mowgli and his panther friend, Bagheera, are on the run in the deepest parts of the jungle. On their journey, the two meet a sinister snake named Kaa, a herd of elephants and a giant bear named Baloo, who teaches them the swingin' musical rhythms of the jungle. After surviving a dangerous encounter with a band of monkeys led by King Louie, Mowgli and Bagheera are forced to run for their lives. When Shere Khan returns, our heroes must rally their fellow animals into battle and restore peace throughout the jungle. There will be a performance at the end, feel free to sing along to the classic songs you love.

Sehmel Park Pavilion • Fee \$199

ID# 4491 7/26 - 7/30 9a-4p M-F

AGES  
7-13

## THEATER CAMP

### STAGECRAFT THE VIDEO GAME

Finally, there's a video game about life in the theatre! And here's the best part, the game plays out live, onstage! Katie is in an all-too-familiar predicament. She's running auditions for the school play and — surprise, surprise! — she needs more guys. Her cousin Matt, who is obsessed with video games, isn't interested in helping her out. He's got levels to pass and villains to conquer. She strikes a deal with him. He has to be in the play unless he can beat the new, never-before-seen video game she's brought along with her. Matt's up for the challenge and soon finds himself in a wild, virtual world of theatre where he must tackle casting decisions, staging and set building challenges, and ultimately put on a show! It proves to be the most difficult — and rewarding — game he's ever played.

Rosedale Hall • Fee \$149

ID# 4503 8/2 - 8/6 1-4p M-F

AGES  
5-7

## ENCHANTED BOOKSHOP

During the day, a Likely Story may look like any other used bookstore. But at night, it's a place where magic happens. Six characters — Dorothy Gale, Robin Hood, Pollyanna, Sherlock Holmes, Heidi, and Tom Sawyer — long to help Margie, the scatterbrained owner, save her struggling store. But they're not allowed to leave the building or be seen by human eyes. So when a pair of smugglers comes looking for a stolen necklace hidden inside one of the books, the characters are torn. Should they warn Margie and risk disappearing forever? Or can they find a way to defeat the crooks without being seen?

Rosedale Hall • Fee \$149

ID# 4504 8/9 - 8/13 1-4p M-F

AGES  
8-12

## BRYCEN TONEY COMMUNITY RECREATION SPECIALIST

[BTONEY@PENMETPARKS.ORG](mailto:BTONEY@PENMETPARKS.ORG)

253-649-0351

My name is Brycen Toney and I am the Community Recreation Specialist here at PenMet. I oversee camps, classes, and our community recreation programs. I am so

excited to work with the community and create opportunities for community members to make lasting memories.

We had so much fun with our summer camp season this last summer and I am so excited to provide more opportunities for fun in our community during these uncertain times. I love getting outdoors and interacting with nature.





## SPORTS CAMPS



### SKYHAWKS CAMPS

#### SKYHAWKS VOLLEYBALL

All aspects of the game are taught through drills and exercises that focus on passing, setting, hitting and serving in this co-ed camp. Our volleyball staff will assist each athlete in developing the fundamental skills of the game through game-based drills and daily scrimmages aimed at developing the whole player.

**Sehmel Park Field #3 • Fee \$142**

ID# 4479	6/29 - 7/2	9a-12p	Tu-F
ID# 4512	8/9 - 8/12	9a-12p	M-Th

AGES  
6-12

#### SKYHAWKS LACROSSE

Lacrosse combines basic skills used in soccer, basketball and hockey into one fast-paced game. Athletes will learn the fundamentals of stick handling, cradling, passing, and shooting in a fun, non-checking environment.

**Sehmel Park Field #2**

**Fee \$129**

ID# 4490	7/6 - 7/9	9a-12p	Tu-F
----------	-----------	--------	------

AGES  
6-12

**Fee \$142**

ID# 4501	7/26 - 7/30	9a-12p	M-F
----------	-------------	--------	-----

#### SKYHAWKS TENNIS

In Skyhawks tennis programs, boys and girls learn proper grips, footwork, strokes, volleys and serves, as well as the rules and etiquette that make tennis an exciting game. Programs fill quickly due to limited court space.

**Sehmel Park Tennis Court • Fee \$142**

ID# 4514	8/16 - 8/20	9a-12p	M-F
----------	-------------	--------	-----

AGES  
5-11

#### SKYHAWKS FLAG FOOTBALL

Campers learn skills on both sides of the football including the core components of passing, catching, and defense--all in a fun and positive environment. The week ends with the Skyhawks Sports Bowl!

**Sehmel Park Field #2**

**Fee \$142**

ID# 4511	8/9 - 8/12	9a-12p	M-Th
----------	------------	--------	------

AGES  
4-6

**Sehmel Park Turf Field**

**Fee \$129**

ID# 4489	7/6 - 7/9	1-4p	Tu-F
----------	-----------	------	------

AGES  
6-12

**Sehmel Park Turf Field**

**Fee \$142**

ID# 4510	8/9 - 8/12	9a-12p	M-Th
----------	------------	--------	------

AGES  
7-12

### ARCHERY

Archery camp--have fun while learning to shoot a bow and arrow with Brad Owen, 3rd Level Instructor with USA Archery. This camp will feature an introduction to various types of archery gear, learning how to shoot properly, practicing, competitions, and also related arts & crafts.

**Sehmel Park Amphitheater • Fee \$119**

ID# 4466	7/6 - 7/9	1-4p	Tu-F
ID# 4465	8/9 - 8/12	1-4p	M-Th

AGES  
9-12

### PE CAMP

Have a blast playing classic P.E. games - old and new! Camp will be filled with laughter and exercise as kids get to run full swing into Summer. They will learn games such as Smaug's Treasure, SPUD, Sharks and Minnows while playing classics such as capture the flag and freeze tag - plus a ton more. We will end the camp with an epic water balloon fight, be prepared!

**Sehmel Park Pavilion • Fee \$119**

ID# 4464	8/16 - 8/20	9a-12p	M-F
----------	-------------	--------	-----

AGES  
6-12

- PAID ADVERTISEMENT -

## Sail Camp

Do something amazing this summer!



At our summer camp your child will gain confidence, learn new skills, make friends, and have an adventure.

**Weekly from June 14 - Sept 3**

**9AM-4PM**

**Youth ages 8-12**

**\$425/wk M-F**

**Teen ages 12-18**

**\$425/wk M-F**



In Partnership for the Benefit of Youth Sailing



For more information  
GHYCJuniorsail.org  
email

GHYCJuniorsail@gmail.com  
phone 253.242.3616



## SKYHAWKS

### BASKETBALL (HALF-DAY)

This Basketball Camp is designed to develop a players fundamental skills in a variety of ways. Campers will learn about Team Play, Sportsmanship, and Hard Work throughout the week. They will be lead through station work that will focus on ball handling, passing, shooting, and defense. Campers will then use what they learn in contests and games where they will be grouped by age and ability. This camp is for kids who are new to the game of basketball as well as those who are looking to advance their overall skills.

**Sehmel Park Basketball Court • Fee \$142**

ID# 4499 7/19 - 7/23 9a-12p M-F

AGES  
5-9

### MINI HAWK

This baseball, flag football, and soccer program gives 4 to 6 year-olds a fun and positive first step into athletics. Through games and activities, campers explore balance, hand/eye coordination, and skill development at their own pace.

**Sehmel Park Turf Field**

**Fee \$129**

ID# 4486 7/6 - 7/9 9a-12p Tu-F

**Fee \$142**

ID# 4519 8/2 - 8/6 9a-12p M-F

**Fee \$179**

ID# 4516 8/23 - 8/27 9a-3p M-F

AGES  
4-6

AGES  
4-6

AGES  
7-12

### BEST OF SKYHAWKS CAMP GAMES!

New camp from Skyhawks! We combine all the best camp games into one fun-filled week. Athletes will learn strategy and teamwork through games like Capture the Flag and Dodgeball.

**Sehmel Park Field #1 • Fee \$142**

ID# 4500 7/26 - 7/30 9a-12p M-F

AGES  
6-12

### SKYHAWKS MULTI-SPORT

In this multi-sport camp we combine soccer, flag football and basketball into one fun-filled week. Athletes will learn the rules and essentials skills of each sport along with vital life lessons such as respect and teamwork.

**Sehmel Park Turf Field • Fee \$179**

ID# 4509 8/2 - 8/6 9a-3p M-F

ID# 4515 8/23 - 8/27 9a-3p M-F

AGES  
7-12

## STEM & PLAY: SOCCER

STEM & Play programs use sports as the real-life application to engage elementary and middle school-aged participants. Our double-play combination of physical activity and cognitive thinking provides a comprehensive, inquiry-based educational experience and a solution for crucial science, technology, engineering and math (STEM) literacy for students. Using our progressive curriculum, boys and girls will gain the technical skills & sport knowledge required for that next step into soccer.

**Sehmel Park Turf Field • Fee \$179**

ID# 4494 7/16 - 8/20 9a-3p M-F

AGES  
7-12

## BASKETBALL: STEM

This program combines strategic STEM-based activities with traditional Skyhawks basketball instruction and a focus on life skills such as teamwork and sportsmanship. The STEM Sports basketball curriculum educates children on subjects including velocity and acceleration, basketball shoe design, tracking with technology and more. Campers will also learn the fundamentals of passing, shooting, ball handling, rebounding and defense through skill-based drills and scrimmages.

**Sehmel Park Basketball Court • Fee \$169**

ID# 4498 7/19 - 7/23 9a -3p M-F

AGES  
7-12

## SOCCER

Skyhawks is the nation's #1 camp for learning the fundamentals of soccer. Using our progressive curriculum, boys and girls will gain the technical skills & sport knowledge required for that next step into soccer.

**Sehmel Park Turf Field**

**Fee \$142**

ID# 4517 8/30 - 9/3 9a-12p M-F

AGES  
4-6

**Fee \$142**

ID# 4477 6/29 - 7/2 9a-12p Tu-F

AGES  
4-7

ID# 4497 7/12 - 7/16 9a-12p M-F

**Fee \$142**

ID# 4513 8/16 - 8/20 9a-12p M-F

AGES  
5-7

**Fee \$179**

ID# 4478 6/29 - 7/2 9a-3p Tu-F

AGES  
7-12

ID# 4520 7/12 - 7/16 9a-3p M-F

**Fee \$179**

ID# 4518 8/30 - 9/3 9a-3p M-F

AGES  
6-12







## BOOK YOUR EVENT TODAY!

With stunning scenery and ample amenities, our venues are sure to make memories that will last a lifetime. Ask about our non-profit rates!

**Book online or contact: 253-313-5090 or [info@penmetparks.org](mailto:info@penmetparks.org)**

*All events must adhere to state COVID-19 guidelines for capacity and safety measures.*

### SEHMEL PARK PAVILION

A beautiful heated indoor park setting with 1,952 square feet of space with rollaway barn doors for outdoor access.

#### AMENITIES

Tables, Chairs, 2 Indoor Restrooms, 2 Changing Rooms, Industrial Food Warmer, Industrial Refrigerator, and Outdoor Wedding Alter

**HOURLY RATE \$150 • ALL DAY RATE (8 hrs) \$1,000**

**KID'S BIRTHDAY PARTY RATE (2 hrs) \$150**



### ROSEDALE HALL

This historic hall provides space to host parties, banquets, ceremonies and more! With hardwood flooring, this space is 2,236 square feet including: Tables, Chairs, Full Kitchen, 2 Indoor Restrooms and Stage.

#### RATES

**1 – 30 GUESTS \$50 per hour**

**30 – 60 GUESTS \$80 per hour**



## *Now Available!*

### **Practices, Games, Tournaments and more!**

If you're looking for a fantastic location to host your favorite sporting event, we have the venues for you!

### **Sehmel Homestead Park**

10123 78th Ave NW,  
Gig Harbor, WA 98332

Offers 1 baseball field and 2 softball fields, two tennis courts and a full-size turf football/soccer field!

### **Other field locations:**

- Rosedale Baseball Field: 8205 86th Ave NW, Gig Harbor, WA 98332
- Hale Pass Baseball Field: 3607 Ray Nash Dr NW, Gig Harbor, WA 98335

PenMet Parks is happy to announce new lighting on our turf football/soccer field! This means extended rental availability and a safer way to play. We have also made the addition of an electronic scoreboard on field #1. Please feel free to contact us anytime with questions or for more information.

**Contact:**  
253-858-3400 or  
[info@penmetparks.org](mailto:info@penmetparks.org)

### **AIDEN KRUG FACILITIES RENTAL COORDINATOR**

[AKRUG@PENMETPARKS.ORG](mailto:AKRUG@PENMETPARKS.ORG)  
253-313-5090



Growing up here in the Gig Harbor Community, I was fortunate to see how great of a place we all live in and how much PenMet has an effect on our everyday lives. Being the Facilities Coordinator at PenMet I see how a PenMet program can have a positive impact on a child's life or how significant hosting a special event with PenMet can be. My favorite PenMet park is Narrows Park, this park has the best view of the Tacoma Narrows Bridge and the occasional whale sighting. I coach baseball at Peninsula High School and I am a huge Seattle Sports fan.



## TEEN BOOK CLUB

3rd THURSDAY of EACH MONTH • 5-6:30p

The PenMet Parks Teen Advisory Committee is excited to host our first Book Club! This book club will be led by teens for teens. Each month will feature a new young adult book from various genres within fiction (fantasy, thriller etc.)

Meetings will be held via Zoom but will transition to in-person as COVID restrictions allow.

Want to join? Contact Kelly Darling at 253-649-0350 or [KDarling@penmetparks.org](mailto:KDarling@penmetparks.org)

FIRST MEETING  
MARCH 18TH!



## TEEN DRIVE-IN TRIVIA NIGHT



SATURDAY, MARCH 20 • 6-7:30p  
Community Recreation Center • \$10/vehicle

Grab your friends and join our Teen Advisory Committee as they host a Drive-In Trivia Night. We will be using KAHOOT! to test your knowledge on pop culture and current events with prizes each round. Concessions will be available with proceeds benefiting the Teen Advisory Committee. ID #4571

## TEEN Mini GLOW GOLF

Community Recreation Center • \$8/person

The Teen Advisory Committee is excited to host Teen Mini Glow Golf! Enjoy 18 holes with fun lights all around the course and music in the background. There will also be other glow games for teens to participate in as well as low cost concessions.

APRIL 2	APRIL 9	APRIL 16
4572 8-9p	4575 8-9p	4576 8-9p
4573 9-10p	4574 9-10p	4577 9-10p



## CALLING ALL TEENS!

Are you a teen or know someone who is that is looking to get involved, have some fun and make a difference? Join the TEEN ADVISORY COMMITTEE!

### What is the Teen Advisory Committee?

The Teen Advisory Committee or TAC is a group of Middle and High School Students who plan, and host social activities and events for local teens. The TAC Plans outings, trivia nights, special events and more! Teens involved in the TAC also volunteer in our community by assisting in camps and events for PenMet Parks.

Join our TAC meetings held Wednesdays twice monthly to collaborate and plan monthly happenings.

### Want to learn more or get involved?

Contact Kelly Darling at [kdarling@penmetparks.org](mailto:kdarling@penmetparks.org) or 253-649-0350.



### UPCOMING MEETINGS:

MARCH 17 4:30 – 6:30PM

APRIL 7 4:30 – 6:30PM

APRIL 28 4:30 -6:30PM





Enjoy themed activities in your home with our PenMet Parks REctivity Kits. Each kit includes 8-10 crafts, experiments, games and/or snacks. The kits are geared for kids aged 5-12. All supplies are included except for glue, scissors, and tape.

**Pick up kits from 12-4pm inside the Sehmel Homestead Park Pavilion on date listed.**

If you would like your child to receive a kit but they are outside the age range, please call (253) 858-3400 to register.

**Fee \$20**

## INTO THE WOODS

This kit will have you stepping into and exploring the lush forests that reside around us. Have fun with plant identification activities, a forest friends craft, a scavenger hunt, and more!

ID# 4413 3/24

## WILD ABOUT WEATHER

The Wild About Weather kit will have your child learning without them even realizing it! They'll conduct a rain cloud experiment, create their own wind chimes, make a weather vane, and more!

ID# 4524 4/21

## STEP INTO SPRING

This kit will have you excited to celebrate the start of spring! Have fun creating raindrop suncatchers, flower seed bombs, no bake birds nests, and more!

ID# 4414 3/24

## ALL ABOUT BUGS

The All About Bugs kit will include supplies to create your own bug maze, dragonfly suncatcher, crystal butterflies, and more!

ID# 4526 5/19

## AROUND THE WORLD

Go around the world from the comfort of your own home. This kit will have your child celebrating The Carnival of Brazil, creating Chinese dragon puppets, making colorful Holi powder in honor of the Indian Holi Festival, and more!

ID# 4523 4/21

## COSMIC CRAFTS

The Cosmic Crafts kit will include supplies to create your own paper plate UFO, cardboard space shuttle, galaxy playdough, moon rocks, and more!

ID# 4525 5/19

### KELLY DARLING SPECIAL EVENTS COORDINATOR

KDARLING@PENMETPARKS.ORG  
253-649-0350



Hello! My name Kelly Darling and I am the Special Events Coordinator for PenMet Parks. This role allows me the opportunity to fulfill my passion of serving an amazing community by providing fun and memorable experiences for all to enjoy. Although our current special events are not what they typically are, it has been exciting to generate new ones and create safe recreational opportunities for our constituents.

In my free time I enjoy exploring the PNW by way of hiking and camping, trying out new coffeeshops and reading all the books I can! I currently serve on the Gig Harbor Young Professionals Committee as the Secretary, volunteer with French Toast Theatre, and serve as a Troop Leader for a group of second grade Girl Scouts.



## VIRTUAL MURDER MYSTERY: THIS ONE LAST TIME

Friday March 26 • 6-8 PM

Ages 16+ • Fee \$49

This is the mystery event everyone is virtually dying to attend! This Zoom mystery party is very similar to an in-person murder mystery party: a night of intrigue, murder, investigation, and laughing. Lots of laughing. Invite your friends and family, or join a group of complete strangers, in an unforgettable evening hosted by our Professional Mystery Detective, who will guide you and the other guests through solving a perplexing crime. "This One Last Time." This is a spin on the movie Clue, where a group of eight individuals is blackmailed and invited to a mansion by a mysterious person named "R.I.P." All of the characters are quirky and unique and of course, a murder mystery ensues upon their arrival. Price is per person. Access to Zoom is required to participate. ID# 4440



## LEPRECHAUNS ON THE LOOSE!

March 1 – 31 • Sehmel Homestead Park

Leprechauns are on the loose at the Sehmel Homestead Park trails! Start your search on the trail behind the playground. Find all the leprechauns to be entered to win a TREASURE BAG! Bring a phone to scan a QR Code in order to participate.



## MOTHER SON DATE NIGHT: YOU'RE MY SUPERHERO

FRI MAY 14TH • SAT MAY 15TH  
COMMUNITY RECREATION CENTER

Calling all Superhero moms and their sidekicks! You are invited to our Mother Son Date Night. Enjoy superhero themed mini golf, games and crafts, a photo station, and refreshments. Whether you dress fancy or wear a cape, this is a night that you and your son will remember for years to come.

\$12/person  
(both moms and sons need to register).  
Registration closes May 7. Masks required.

Kelly Darling: [Kdarling@penmetparks.org](mailto:Kdarling@penmetparks.org)  
or (253) 649-0350

ID# 4553 Friday May 14 • 6:30-8:30p

ID# 4554 Saturday May 15 • 3-5p

ID# 4554 Saturday May 15 • 6:30-8:30p



## PENMET PARKS AMAZING RACE

SATURDAY, JUNE 5TH • 11A-4P

Registration closes Monday, May 10

Does your family have what it takes to win the first PenMet Parks Amazing Race? Race around town solving clues, completing physical challenges, and working through brain teasers. Each participant will receive a t-shirt. Winning team will be awarded a basket with local goodies....and bragging rights! Starting times will be staggered and sent to you via email the week prior.

Fee \$55 • ID #4441

Maximum size group is 5  
per COVID state guidelines.







PO Box 425,  
Gig Harbor, WA 98335

ECRWSS  
Residential Customer

Prsrt Std  
U.S. POSTAGE  
PAID  
Kent, WA  
Permit No. 71

# PenMet Parks

events

## BUNNY EXPRESS

**SATURDAY, APRIL 3 • 9a-3p**

We are bringing the Easter Bunny to your neighborhood!  
Join us for COVID safe Bunny photos, goodies and fun!

### LOCATIONS AND TIMES:

Nichols Center • 9a • ID# 4583

Hales Pass • 10:30a • ID# 4584

Sehmel Homestead Park • Noon • ID# 4585

Community Recreation Center • 2p • ID# 4586



**PENMET  
POP-UPS!**

Be on the look out for PenMet Pop-Up Events!  
Be sure to follow us on social media  
(Facebook & Instagram @penmetparks)  
to find out when and where our next Pop-  
Up Event will be! Pop-Up Events are small  
themed events hosted at various parks  
locations for all to enjoy!



## Bunny Baskets

**PICK UP WEDNESDAY, MARCH 31  
SEHMEL PARK PAVILION • 12-4p**

Everything you need in a bag for setting up  
your own egg hunt at home with the family!  
Each kit comes with 25 pre-stuffed plastic  
eggs with candy and activities for the family.

Pick up your kit on Wednesday, March 31  
between 12-4pm in front of the  
Sehmel Homestead Park Pavilion.

**Fee \$20 • ID# 4412**