

**PenMet Parks**  
Gig Harbor, Washington

# 2019

## ANNUAL REPORT

SEE YOU AT THE PARK!



# WELCOME TO OUR DISTRICT

253.858.3400

[PENMETPARKS.ORG](http://PENMETPARKS.ORG)



# ***PENMET PARKS ANNUAL REPORT***

## **2019**

---

Mission and Core Values.....	2
A Great Year For PenMet Parks.....	3
District Budget Information.....	4
2019 At A Glance.....	5
Community Impact For 15 years.....	6



# THE PENMET WAY

## Mission

*Our mission is to enhance the quality of life by providing parks and recreation opportunities for the community*

## Core Values

**Craft Partnerships** - To provide park and recreation opportunities for our constituents through partnerships

**Acquire Assets** - To acquire land, facilities, and other park assets necessary to provide high quality recreational opportunities; and to employ a decision-making process that is transparent, predictable, and consistent with community planning

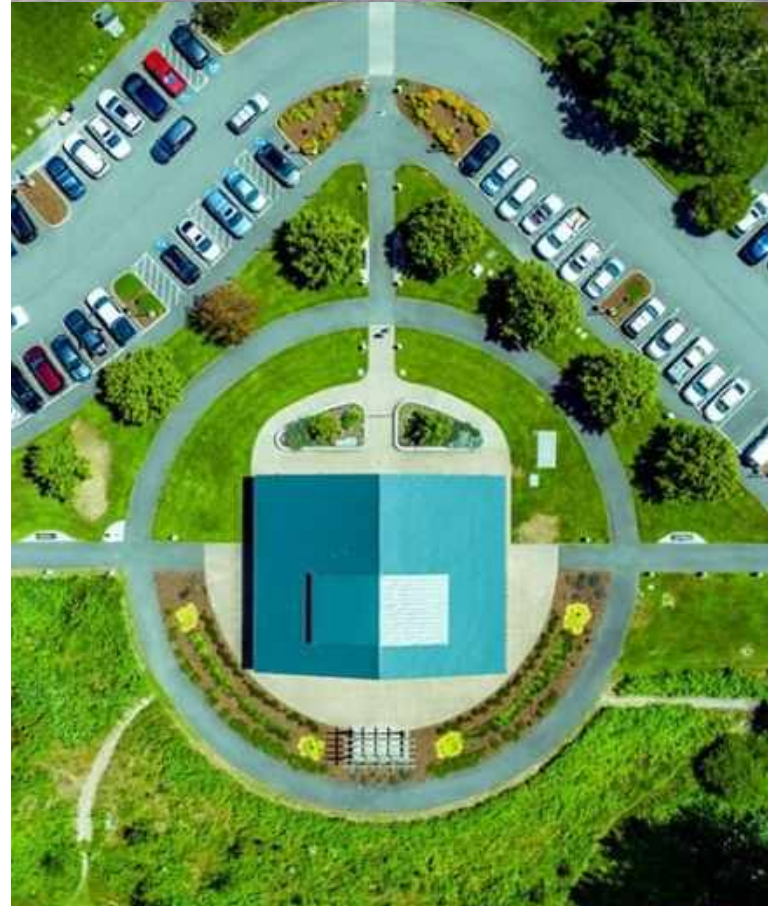
**Develop and Maintain High-Quality Facilities** - To build and maintain high-quality facilities consistent with community planning

**Preserve Open Space** - To preserve open space consistent with community planning

**Promote Health and Wellness** - To provide park and recreational opportunities for our constituents by promoting and providing healthy choices in physical fitness that foster a more active lifestyle and better nutritional choices

**Provide Diverse Recreational Programs** - To facilitate or provide diverse recreational opportunities, consistent with community planning, for all members of our community

**Prudent Management of District Funds** - To ensure the District's ability to provide high-quality operations and maintenance within taxing authority. To maximize the use of tax revenue by using other resources such as grants, user fees, and volunteers. To create and manage reserves for contingencies and capital projects





## **LOOKING BACK...**

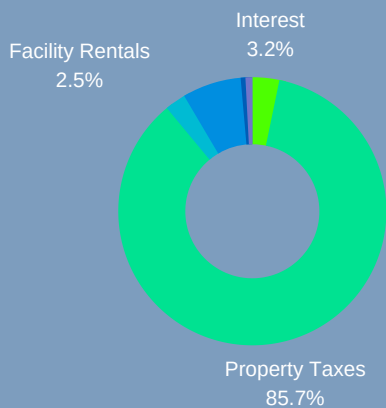
### *2019 WAS A GREAT YEAR*

- In 2019, PenMet Parks (PMP) was proud to craft partnerships with local organizations to support our special events and recreation programming, including partnerships from fifteen local businesses. Significant service days included Parks Appreciation Day, National Public Lands Day, and Orca Recovery Day
- PenMet Parks acquired open space adjacent to Rotary Bark Park property in exchange with Peninsula School District. Due to generous tax payer support and successful Capital Fund management PenMet purchased property for the future site of the Community Recreation Center. As well as, created more field availability with the installation of lighting on the Sehmel Homestead Park Turf Field.
- Strengthened our commitment to developing and maintaining high-quality facilities and services. Project included a well replacement at Sehmel Homestead Park, playground equipment replacements to Sehmel Homestead Park and Rosedale Park, development of a new website, and technological enhancements
- Preserving open space was prioritized through implementation of safety procedures at nature preserves and trails
- Successfully implemented a 48-hour response time on downed trees and contracted with local security to ensure rules and regulations are observed at DeMolay Sand Spit Nature Preserve
- Recreation programs flourished in 2019, reaching new highs in programs (397), participants (4,645), and leagues (84). The introduction of new summer program themes, adult events, teen programs/events, and special population programs all contributed to the success of the department. PMP was proud to continue the implementation of a scholarship program and funding to provide the community opportunities to participate in programs
- Promotion of health and wellness is a major priority for PenMet Parks. In 2019, PenMet incorporated healthy food options at all special events, continued to support tobacco-free parks, added more signage, and passed a proclamation. PMP assisted with partnered events such as the Women's Wellness Expo

# 2019 BUDGET INFORMATION

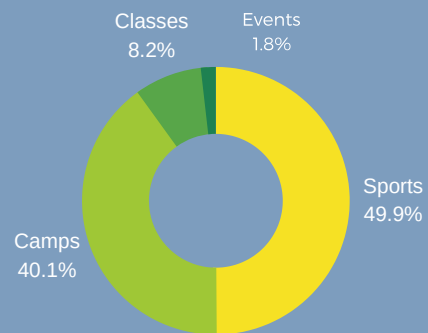
The District is principally funded through property taxes with other revenues collected from sales tax, intergovernmental revenues, charges for services and interest income. PenMet Parks had a 2019 overall operating budget of \$7 million, a recreation revolving fund of 624,426, and a year end capital fund balance of 8.25 million. A strong 2019 year-end capital fund balance met PenMet Parks objectives for planning and development of the Community recreation Center. The District employs 21.3 full-time equivalent staff members.

## General Fund Revenue



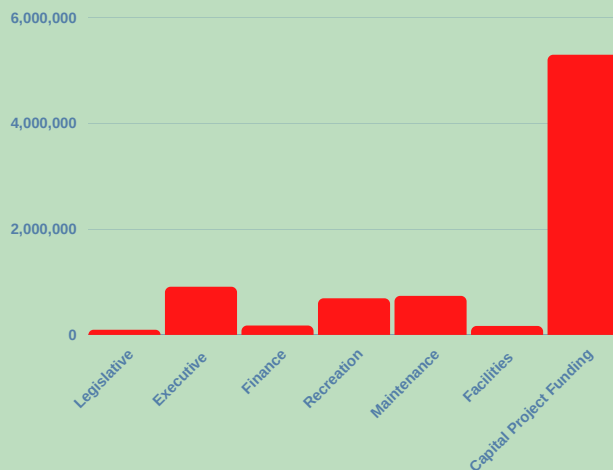
- Sales and other Taxes: \$ 42,604
  - Donations/Miscellaneous: \$ 61,305
  - Facility Rentals: \$187,425
  - Interest: \$ 240,803
  - Program Fees: \$ 527,151
  - Property Taxes: \$ 6,370,071
  - Sale of Land: \$ 1,193,379
- \*Not calculated or shown on graph

## Recreation Services Revenue



- Events: \$ 4,907.05
- Classes: \$ 22,154.48
- Camps: \$ 108,988.64
- Sports: \$ 135,492.41

## 2019 YEAR-END DISTRICT EXPENDITURES BREAKDOWN



- Legislative: \$ 92,565
- Facilities: \$ 164,728
- Finance: \$ 172,732
- Recreation \$ 687,152
- Maintenance: \$ 732,993
- Executive: \$ 905,618
- Capital Project Funding: \$ 5,289,889



# 2019 AT A GLANCE

## RECREATION

4

Major All-Park Events in the year

1500

Athletic participants in 2019

186

Youth classes and camps

## MAINTENANCE

22

PenMet Park properties

660

Acres of Park land

94%

Approval rating from the community

## CAPITAL

2

Projects completed in the 6 yr Capital plan

20K

in Community Park Enhancement Grants

1

Community Rec Center Project and financial funding underway

## ADMINISTRATION

8

New All-Staff Trainings

5

Elected Park Commissioners

100%

Committed to the public



# ***THE COMMUNITY IMPACT***

---



**Kids of all ages look forward to our annual Egg Hunt Event. Thousands of community members come out to participate at Sehmel Homestead Park and enjoy the great Spring weather.**

The Peninsula Metropolitan Park District has marked many milestones in its short 15 years as a District. Having curated (mission driven and volunteer based) recreation programs PenMet Parks has been able to provide Adaptive Recreation Programs for Special Populations, Senior Activities, Adult Programs and Teen Leadership Committees.

Our 15 year anniversary in 2019 was not only a year of growth, but a year to celebrate success and accomplishments. In 2019, PenMet Parks proudly took home the Non-Profit of the Year Award from the Gig Harbor Chamber of Commerce. PenMet was also awarded the "Best Depiction of Theme" Award in the Maritime Gig Parade, Gig Harbor's largest celebration. If those accomplishments weren't enough, former Executive Director Terry Lee received "Distinguished Person of the Year" from the Washington State Parks and Recreation Association.

As we look towards the future of health and wellness in our area, we hope that you will join us. There are ample opportunities to grow together, get involved, preserve our District, and celebrate our community.

# Acknowledgements

## PenMet Board

---

### **Maryellen (Missy) Hill**

President  
mhill@penmetparks.org

### **Amanda Babich**

Clerk  
ababich@penmetparks.org

### **Todd Iverson**

Commissioner

### **Steve Nixon**

Commissioner  
snixon@penmetparks.org

### **Kurt Grimmer**

Commissioner  
kgrimmer@penmetparks.org

### Welcome Incoming Commissioner

### **Lauel Kingsbury**

Commissioner  
lkingsbury@penmetparks.org

### **Doug Nelson**

Executive Director  
(253) 858-3408  
dnelson@penmetparks.org

## Social Media

---

### **Website**

[www.penmetparks.org](http://www.penmetparks.org)

### **Facebook**

[www.facebook.com/Penmetparks/](http://www.facebook.com/Penmetparks/)

### **Twitter**

[twitter.com/Penmetparks](https://twitter.com/Penmetparks)

### **Instagram**

@penmetparks #PenMet

## More Info

---

### **Administrative Offices**

5717 Wollochet Dr. NW BLDG #3  
Gig Harbor, WA 98335  
(252) 858-3400

### **Mailing Address**

PO Box 425  
Gig Harbor, WA 98335

### **District email**

[info@penmetparks.org](mailto:info@penmetparks.org)

